

Boating Guide

Geraldton - Port Denison

Marine Safety



July 2024

Batavia Coast Marina

The Department of Transport (DoT) manages the Batavia Coast Marina and users should abide by the following:

- 5 knot speed limit including a 45 metre buffer zone outside the marina;
- swimming or diving within the marina and marina entrance is prohibited;
- windsurfers, kiteboarders, stand up paddle boards, personal water craft freestyling, towing skiers or other buoyant equipment are prohibited to operate within the marina;
- cleaning fish and dumping offal or rubbish into the marina is prohibited;
- do not place fishing nets, lobster pots, lines or floats within the marina or entrance channel;
- anchoring a vessel anywhere within the marina or entrance channel is prohibited; and
- people departing on charters are not to park vehicles in the penholder section of the car park.

Note: Due to high demand on limited space, club or group activities must be booked through the DoT's Geraldton office. Conditions of operation will apply.

Reduce wash

Vessel wash can cause damage to other vessels, retaining walls and floating pen jetties. Look behind you occasionally to make sure that your boat is not creating too much wash. If your wash is affecting other boats or property, slow down.



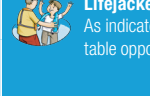
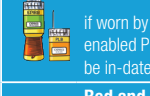


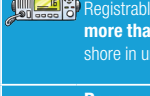
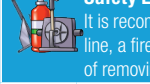
Moorings and pens

Private boat pen hire is available for stopovers of one night or more.

Bookings can be made through the DoT's office in Geraldton, which is open on weekdays only. Please ensure you book in advance to avoid disappointment. Phone 9956 0113.

SAFETY EQUIPMENT REQUIREMENTS



REGISTRABLE VESSELS <small>Including sailing vessels that are or can be propelled by mechanical power.</small>		
	PROTECTED WATERS <small>Includes rivers, lakes, estuaries, harbours and waters within 400 metres from the shore in unprotected waters but excludes Cambridge Gulf and Lake Argyle.</small>	UNPROTECTED WATERS <small>Beyond 400 metres from the shore.</small>
 Recreational Skipper's Ticket <small>The skipper of a recreational vessel, powered by a motor greater than 6 horsepower must hold an RST.</small>	✓	✓
 Lifejacket Carriage <small>A lifejacket, as indicated in the table opposite, must be carried for every person on board.</small>	<small>Vessels smaller than 4.8m</small> ✓	<small>Vessels smaller than 4.8m</small> ✓
	<small>Vessels 4.8m and larger</small> ✓	<small>Vessels 4.8m and larger</small> ✓
 Lifejacket Wearing <small>As indicated in the table opposite.</small>	<small>Children older than one and younger than 12</small> ✓	<small>Children older than one and younger than 12</small> ✓
	<small>Personal Water Craft</small> ✓	<small>Personal Water Craft</small> ✓
 Distress Beacon <i>(in-date)</i> <small>A GPS enabled 406 MHz EPIRB OR</small>	RECOMMENDED	✓
 Red and Orange Flares <i>(in-date)</i> <small>At least two hand held red flares and two hand held orange flares must be carried. OR</small>	RECOMMENDED	✓
 Electronic Visual Distress Signal (EVDs) <small>An electronic signalling device may be carried in lieu of flares IF a GPS enabled EPIRB or PLB (must be worn) is also carried.</small>	RECOMMENDED	✓
 Marine Radio <small>A VHF or HF marine radio on any Registrable Vessel when operating</small>	RECOMMENDED	<small>beyond 4 nautical miles</small> RECOMMENDED
		<small>within 4 nautical miles</small> RECOMMENDED
 Recommended Additional Safety Equipment <small>It is recommended an anchor and line, a fire extinguisher and a means of removing water be carried.</small>	RECOMMENDED	RECOMMENDED

SERM-DLM0722-1

Contact details

Department of Transport

Email: Ed.Boat@transport.wa.gov.au
Website: www.transport.wa.gov.au/marine
Marine Safety Hotline: 13 11 56

Police

Emergency: 000
Water Police: 9442 8600
Geraldton Police: 131 444

Department of Fire and Emergency Services
Marine Rescue Western Australia
Emergency contact: VHF 16
Marine Rescue Geraldton
Marine Rescue Port Denison

Boating Weather Forecasts

Boating weather: 1300 815 916
Website: www.bom.gov.au

Department of Primary Industry and Regional Development

Fishwatch: 1800 815 507
Website: www.dpird.wa.gov.au

Department of Biodiversity, Conservation and Attractions

Website: www.dbca.wa.gov.au



Boating in WA just got smarter.
Download the free Deckee app.



Join us at
facebook.com/MarineSafetyWA



For further information go to
www.transport.wa.gov.au/boatingguides
or scan the QR Code

The information contained in this publication is provided in good faith and believed to be accurate at time of publication. The State shall in no way be liable for any loss sustained or incurred by anyone relying on the information. 16-11-02-SER-0724-WEB-S1

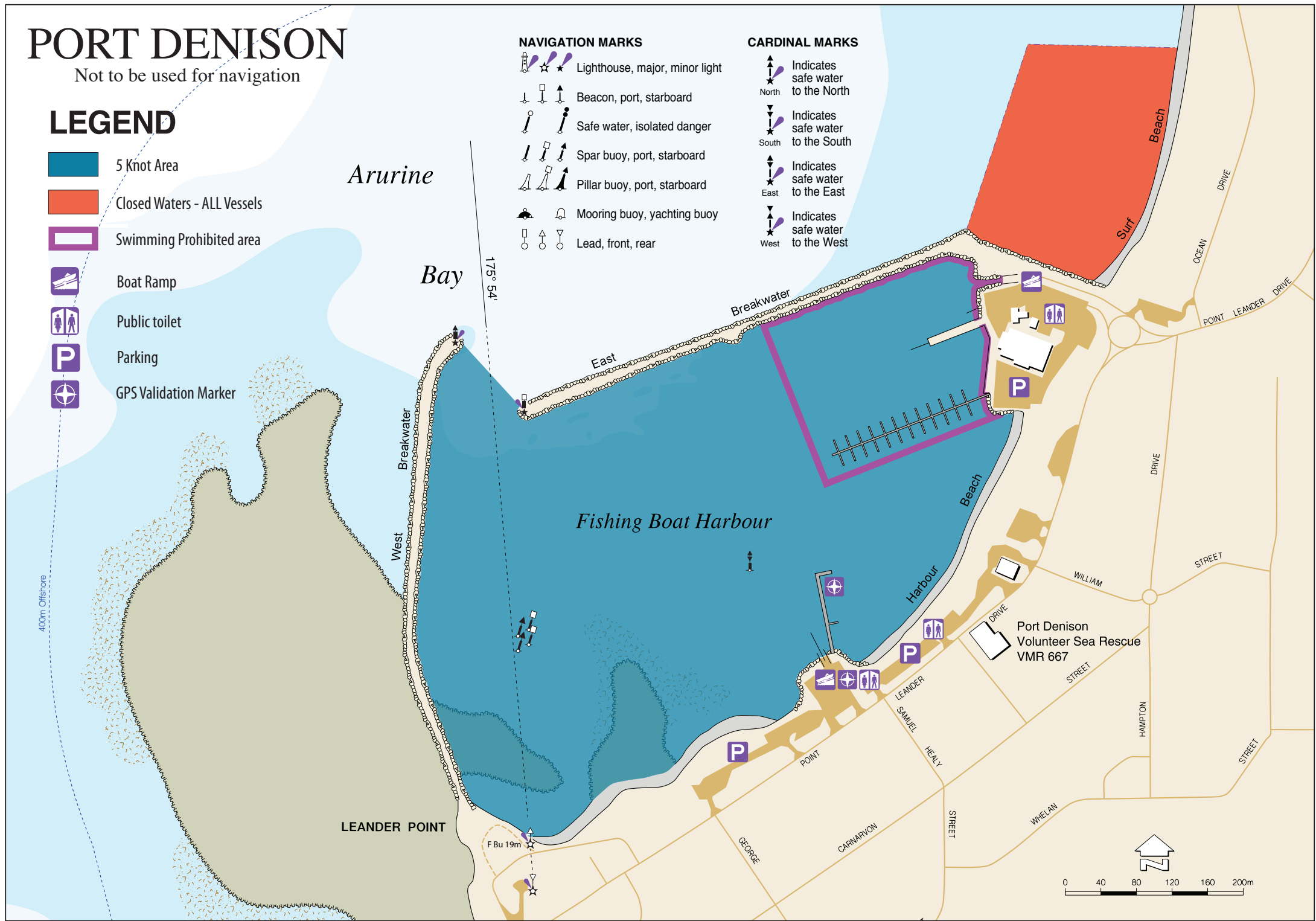


PORT DENISON

Not to be used for navigation

LEGEND

- 5 Knot Area
- Closed Waters - ALL Vessels
- Swimming Prohibited area
- Boat Ramp
- Public toilet
- Parking
- GPS Validation Marker



Recreational Skipper's Ticket (RST)

The person in charge of a recreational vessel with a motor of **6 horsepower or less** is not required to hold a Recreational Skipper's Ticket (RST).

A skipper in charge of a recreational vessel with a motor **greater than 6 horsepower** is required to hold an RST and carry it when boating.

Age restrictions

A person under 10 years may not drive a motor boat. RST holders over 14 but under 16 years of age are restricted to operating during daylight hours at a speed less than 8 knots.

Interstate skipper's tickets

If you hold a valid/current interstate ticket, recognised by DoT and you enter, as a visitor or with the intention of permanently residing in Western Australia, you have three months to have the qualification recognised.

General speed limit restrictions

It is illegal, in any navigable waters to drive a motor boat at a speed exceeding eight knots, water ski or para-sail:

- through an arch of a bridge;
- in or through a mooring area;
- within 15 metres of a vessel underway;
- within 50 metres of -
 - (i) a moored vessel;
 - (ii) a person in the water;
 - (iii) a jetty or wharf;
 - (iv) a river bank or low water mark.

GPS validation markers

Global Positioning System (GPS) validation markers are unique visible marks placed at a number of public boat ramps and jetties where skippers and owners of portable GPS units can validate their position and map datum settings. The markers are small, flat and yellow, similar to 'cats eye' road lane markers.

For further information visit our website or call 13 11 56.



Personal water craft (PWC)

Every skipper of a PWC must hold an RST. A skipper who is older than 14 but under 16 years of age with an RST can only operate a PWC during daylight hours at a maximum speed of 8 knots.

- Every person on board a PWC must wear a lifejacket (minimum 50S) at all times.
- When travelling beyond 400 metres from shore in unprotected waters you need:
 - a GPS enabled EPIRB or PLB (must be worn); and
 - flares or electronic visual distress signal device.
- Beyond 4 nautical miles from shore in unprotected waters a marine radio must also be carried.

Freestyling and wake jumping is prohibited:

- within any speed restricted area;
- within 30 metres of another PWC;
- within 50 metres of another vessel or person in the water.

PWC may operate when towing a water skier. When towing a water skier all vessels are required to carry an observer of at least 14 years of age. Observers must also wear a lifejacket.

PWC not engaged in water skiing must at all times remain well clear of the take-off and landing area and any vessels engaged in water skiing.

For further information visit our website or call 13 11 56

Paddle Craft

Recreational canoes, kayaks, surf skis, wave skis, inflatables or similar paddle craft must comply with WA marine laws including carriage of safety equipment.

When travelling beyond 400 metres from shore in unprotected waters you need:

- lifejackets (minimum 50S) (must be worn);
- a GPS enabled EPIRB or PLB (must be worn); and
- flares.

For further information visit our website or call 13 11 56.

Kiteboards and windsurfing

With the onset of the sea breeze windsurfers and kiteboarders congregate at many popular locations. In certain conditions these small, fast moving sailing craft may be difficult to see and skippers need to maintain a proper lookout at all times and take appropriate action.

All windsurfers and kiteboarders have a duty of care to ensure their activities are conducted with regard to the prevailing conditions and circumstances and take appropriate action to avoid collisions.

When travelling beyond 400 metres from shore in unprotected waters you need:

- lifejackets (minimum 50S) (must be worn);
- a GPS enabled EPIRB or PLB (must be worn); and
- flares.

For further information visit our website or call 13 11 56

Aids to navigation

It is illegal to interfere with, remove or damage any beacon, buoy or other artificial aid to navigation. Without permission in writing from the Department of Transport (DoT), it is illegal to secure any vessel to any beacon, buoy, seamark or other aid to navigation.

Obstruction of navigation aids, channels and leads

Cray pots, lines and floats, drop nets, fishing nets, marker buoys or other buoyed objects can not be placed or allowed to remain in any channel or fairway in any port or harbour, or in any channel, fairway or passage in any navigable waters without the permission of DoT.

You also can't anchor or moor a vessel in any channel or fairway, unless the vessel is in distress.



GERALDTON

Not to be used for navigation

LEGEND

- | | | | |
|--|-----------------------------------|--|-----------------------|
| | 5 Knot Area | | Boat Ramp |
| | 8 Knot Area | | Unsealed Boat Ramp |
| | Water Ski Area | | Public Toilet |
| | Closed Waters - ALL Vessels | | Parking |
| | Closed Waters - Motorised Vessels | | GPS Validation Marker |
| | Swimming Prohibited area | | |

NAVIGATION MARKS

- | | |
|--|--------------------------------|
| | Lighthouse, major, minor light |
| | Beacon, port, starboard |
| | Safe water, isolated danger |
| | Spar buoy, port, starboard |
| | Pillar buoy, port, starboard |
| | Mooring buoy, yachting buoy |
| | Lead, front, rear |

CARDINAL MARKS

- | | |
|--|-----------------------------------|
| | Indicates safe water to the North |
| | Indicates safe water to the South |
| | Indicates safe water to the East |
| | Indicates safe water to the West |

Diving

Any boat with divers (not snorkellers) operating from it must always display signals by day or night to alert other boat users. The daytime signal for divers is an International Code Flag "A". The flag must be at least 750 millimetres long and 600 millimetres wide.

Divers operating without a vessel, for example from a jetty, must also display the International Code Flag "A".

The flag can be displayed from a buoy and must not be less than 300 millimetres in length and 200 millimetres in width.

The flag must be clearly visible to all vessels operating in the vicinity.

Vessels to keep clear

When approaching a place or another vessel displaying the International Code Flag "A" or the appropriate signal during the hours of darkness, you must —

- keep your vessel at least 50 metres clear of that place or vessel; or
- where it is not possible to keep 50 metres clear of that place or vessel —
 - proceed at the slowest speed at which the vessel can be safely navigated; and
 - maintain a proper lookout for people in the water.

For further information visit our website or call 13 11 56.

Water skiing

Water skiing involves being towed over water at a speed of 8 knots or more by a motor boat.

It takes at least three people to go water skiing:

- A driver of at least 17 years of age with a Recreational Skipper's Ticket.
- An observer of at least 14 years of age.
- A person being towed.

Vessels taking off with skiers always give way to vessels landing a skier.

Beach take-off and landings are only permitted in the designated take-off and landing areas.

Skiing is only permitted between the hours of sunrise to sunset, unless otherwise indicated.

For further information visit our website or call 13 11 56.

Maintain a good lookout and a safe speed

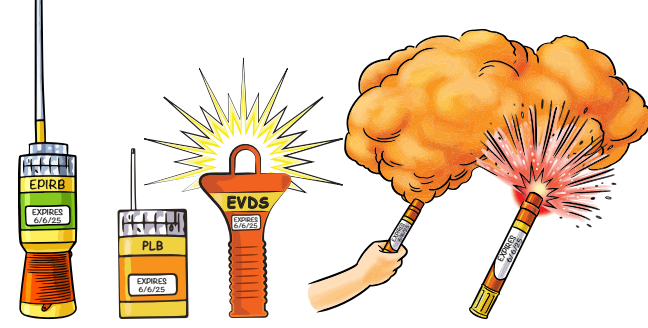
Please maintain a good lookout for swimmers, canoes, paddle craft and other vessels. Exercise caution and operate at a safe speed when navigating.

Navigation lights

All vessels underway during the hours of sunset to sunrise must display appropriate navigation lights for the size and type of craft.

For further information visit our website or call 13 11 56.

Distress beacons, EVDS and flares must be in-date

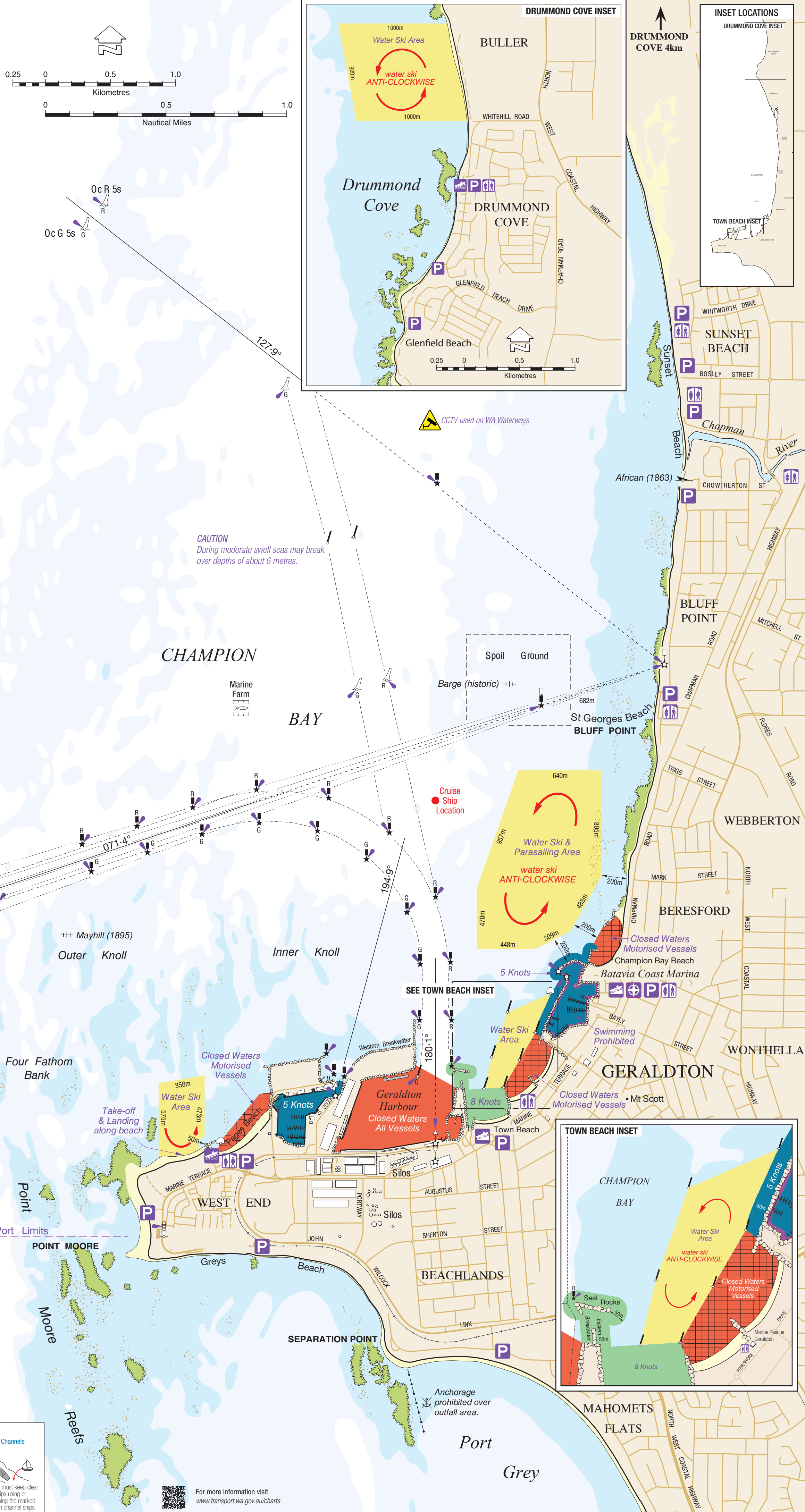


Remember to LOG ON, LOG OFF! every trip

with the local Marine Rescue group

Basic rules of the waterways

- | | | | | | | | | | |
|--|---|--|--|--|---|--|--|--|--|
| | Vessel Overtaking Another | | Power Vessels Meeting Head On | | Power Vessels Meeting | | Power Meeting Sailing Vessel | | Ships in Channels |
| | Every overtaking vessel gives way (this includes sailing vessels) | | Each vessel alters course to starboard (right) | | Give way to vessels on your starboard (right) | | Power gives way to sail except when sailing vessel is overtaking | | All vessels must keep clear of ships using or approaching the marked navigation channel ships. |



For more information visit www.transport.wa.gov.au/charts